

Photo by Christa Markley

COSTA RICA

Butterfly Bonanza with the National Butterfly Center™
June 26 – July 3, 2022



Costa Rica is world-renowned for its biodiversity, and its Lepidoptera populations are no exception—species numbers are estimated to be well in the thousands. Join the National Butterfly Center on this 8-day journey to explore some of the highlights of this tropical paradise, from the country's arid northwest to the lush lowlands of the Caribbean. Guided walks amid cultivated gardens and natural areas will be balanced with time at leisure to relax or explore on your own.

PROGRAM HIGHLIGHTS

- Take guided walks and exciting hikes through gorgeous gardens and lush rainforests to enjoy the rich biodiversity and search for butterflies, birds, and other wildlife.
- Visit the area around Santa Maria Volcano in Rincón de la Vieja National Park to learn about the University of Costa Rica Butterfly Conservation Project.
- Learn from one of Costa Rica's foremost lepidopterists, Ricardo Murillo, your trip's expert environmental educator.

WHAT'S INCLUDED?

- Bilingual guide
- Accommodations
- Activities
- Entrance fees
- In-country transportation
- Meals & non-alcoholic beverages
- Bottled water on the bus
- Carbon offset



Photo by Isaac Bardas

ITINERARY

BLD = BREAKFAST, LUNCH, DINNER



JUNE 26 - LIBERIA

Upon arrival in Liberia, after clearing customs and immigration, you will be met and transferred to the Buena Vista Lodge. Check in and get settled in your room. Have a group dinner and orientation at the lodge this evening. *Overnight at Buena Vista Lodge. (D)*

JUNE 27 - LIBERIA

Start today with a walk around the lodge gardens and trails. The property features native plants, allowing for great butterfly and bird sightings. Enjoy lunch at the hotel and then take another butterfly walk. Late in the afternoon, you will have time at leisure to relax and enjoy the hotel amenities. Before dinner, attend a butterfly talk with your trip's expert environmental educator, Costa Rican entomologist Ricardo Murillo. Later, take a night hike where you will have the opportunity to use a black light for insect observation. *Overnight at Buena Vista Lodge. (BLD)*

JUNE 28 - ARENAL

Early this morning, depart for Santa Maria Volcano area to learn about the University of Costa Rica Butterfly Conservation Project. Next take a butterfly observation walk in the park with Mr. Murillo. After lunch in the area, depart for Arenal and Arenal Observatory Lodge. The lodge rests on a ridge amid lush rainforest between Arenal Volcano and Lake Arenal, and is the only hotel located within Arenal National Park. *Overnight at Arenal Observatory Lodge. (BLD)*

JUNE 29 - ARENAL

After breakfast, take a butterfly walk with Mr. Murillo. The lodge is located on 870 acres, including 270 acres of natural primary rainforest with rivers and waterfalls, 400 acres of reforested land, and tropical gardens. The gardens have been designed with flowering plants, shrubs, and trees chosen to attract wildlife and butterflies. After lunch, take another butterfly walk around the property. The remainder of the afternoon will be at leisure to relax and take in the beautiful views, enjoy the lodge's spa services (at additional cost), or take an optional tour in the area, such as visiting the local hot springs. Before dinner, enjoy another talk with Mr. Murillo. This evening have another opportunity to use a black light for insect observation. *Overnight at Arenal Observatory Lodge. (BLD)*

JUNE 30 - SARAPIQUÍ

This morning, depart for Sarapiquí and Selva Verde Lodge, located in the country's Caribbean lowlands. Selva Verde abuts the Sarapiquí River and consists of 500 acres of primary and secondary rainforest. The lodge is designed to have minimal impact on the environment and is a proud participant in the Certification for Sustainable Tourism Program (CST). After settling in, receive an orientation to Selva Verde's facilities and private reserve and enjoy the lodge's many trails. Have a talk with Mr. Murillo before dinner. This evening is at leisure. *Overnight at Selva Verde Lodge. (BLD)*

JULY 1 - SARAPIQUÍ

After breakfast, take a butterfly observation walk around the lodge. There are many trails and gardens throughout the property in addition to a botanical garden, all with plants that attract many different species of butterfly. After lunch, relax or participate in an optional rainforest hike. *Overnight at Selva Verde Lodge. (BLD)*

JULY 2 - SAN JOSÉ

This morning depart for San José via the Poás Volcano route. Upon arrival, explore the city of San José on foot. (No entrance fees are included.) Check in at the hotel and have time to freshen up before a final trip briefing and farewell dinner. *Overnight at Hotel Bougainvillea. (BLD)*

JULY 3 - DEPARTURE

Transfer to the airport for your flight home. (B)

ABOUT YOUR COSTA RICAN EXPERT



Ricardo Murillo

Luis Ricardo Murillo H. discovered his passion for insects at the age of 5. What began with an enormous fear of beetles (*Phyllophaga*) turned to love! He started collecting flies and moths, and then at the age of 7 he decided to specialize in butterflies. At 13, he started working on a butterfly farm and volunteering at the University of Costa Rica Insect Museum, rapidly gaining lab and field experience. He went on to study tropical biology at the National University of Costa Rica, and he obtained a master's degree in science from the University of Costa Rica. Currently, Mr. Murillo is a professor of entomology and wildlife management at the University of Costa Rica School of Biology, where he founded the "Life of Butterflies" exhibit and butterfly breeding research laboratory. He is also the curator of Lepidoptera at the university's Zoology Museum and director of the Leonelo Oviedo Ecological Reserve. His current research focuses on the effects of hybridization and phylogeography of *Morpho* butterflies. He has published more than 20 research articles in international journals and is writing a book on the butterflies and moths of Costa Rica.



LAND PRICING

\$2,895 per person

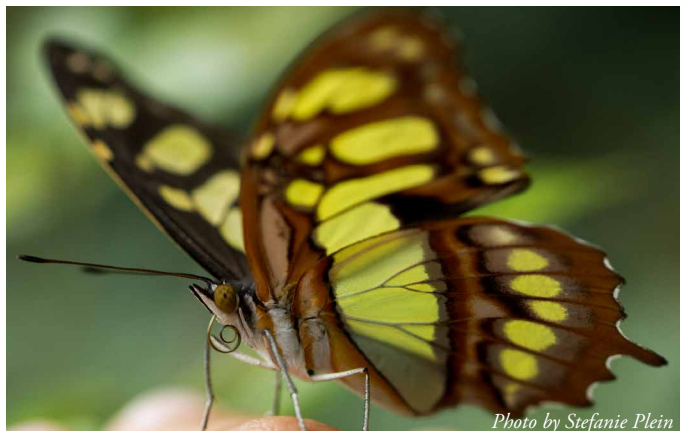
Cost includes meals, accommodations, activities, and entrance fees as indicated in the itinerary, non-alcoholic beverages with meals, in-country transportation, full-time guide, bottled water on the bus, and carbon offset donation.

Does not include international airfare, gratuities, alcoholic beverages, additional services or optional activities, or items of a personal nature. Holbrook can assist with your flight arrangements if desired.

Holbrook Travel strongly recommends that you purchase trip cancellation insurance in the event that you must cancel your participation on the trip. Trip cancellation coverage may be the source of reimbursement if you are forced to cancel your trip. Many travel insurance policies treat Covid-19 as any other illness for cancellations due to medical reasons. We encourage you to make sure that you purchase a policy that covers Covid-19.

THE FINE PRINT

Cost is based on double occupancy; for a single room throughout the trip add \$350 per person. A \$200 per person deposit and enrollment form are required to reserve your space on the trip. This deposit is refundable excluding a \$100 cancellation fee until March 23, 2022, at which time non-refundable final payment is due.



FOR MORE INFORMATION OR TO ENROLL

Visit holbrook.travel/nbc-cr22 or contact Lisa Palmese-Graubard at lisa@holbrooktravel.com or 352-377-7111 x339.